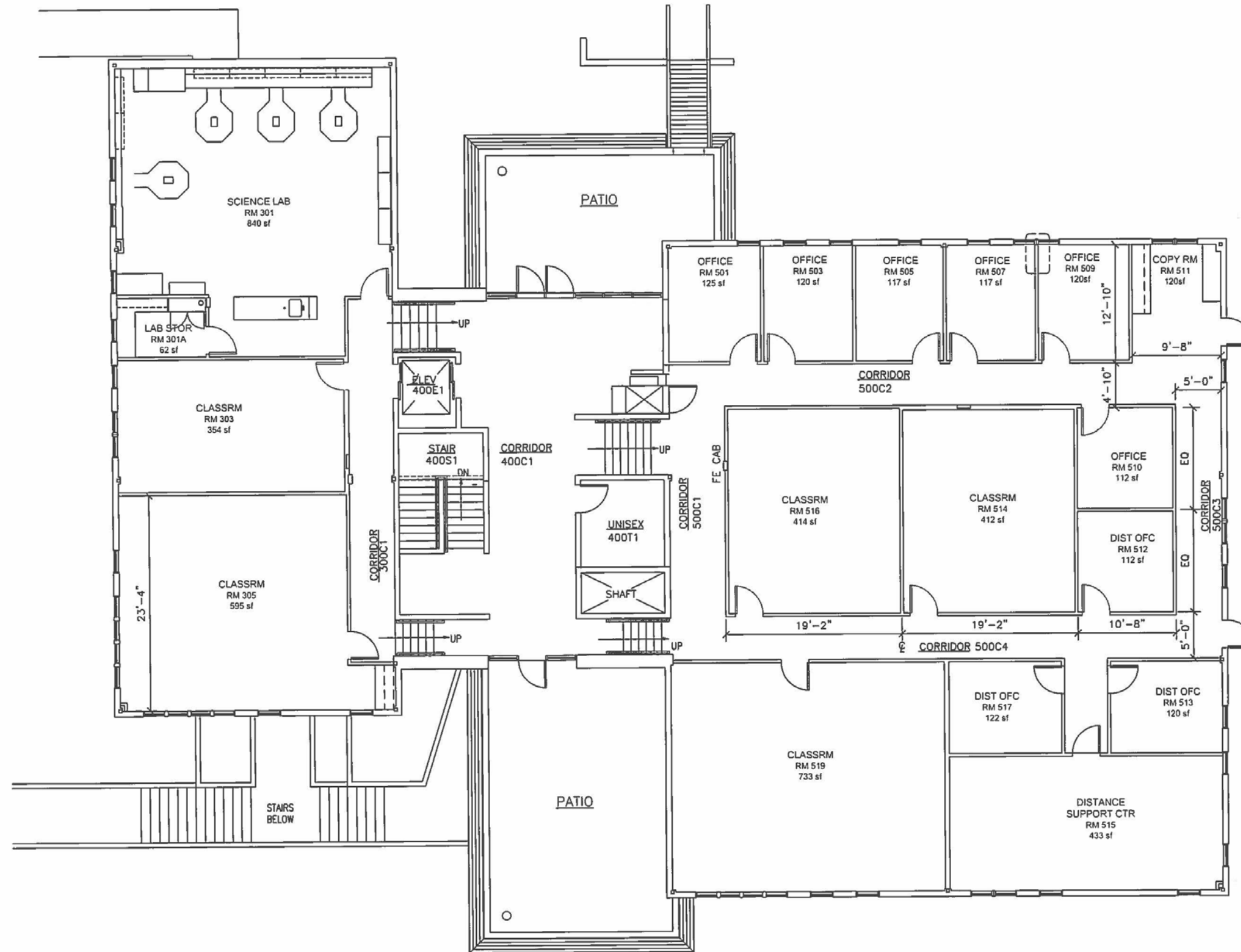


UAS KETCHIKAN (UPPER CAMPUS)
 KE-002 PAUL BUILDING Levels 1 and 2

COMMENT BOX:

Facilities Use Survey 2015
 Dwg updated 11/2014 (PM)

UAS FACILITIES SERVICES
 Facilities Planning & Construction
 11120 Glacier Highway
 Juneau, Alaska 99801



UAS KETCHIKAN (UPPER CAMPUS)
 KE-002 PAUL BUILDING Levels 3,4 & 5

COMMENT BOX:

Facilities Use Survey 2015
 Dwg updated 11/2014 (PM)

UAS FACILITIES SERVICES
 Facilities Planning & Construction
 11120 Glacier Highway
 Juneau, Alaska 99801